

June 2026

ALCHEMY LONG TERM VENTURES FUND, SERIES 3

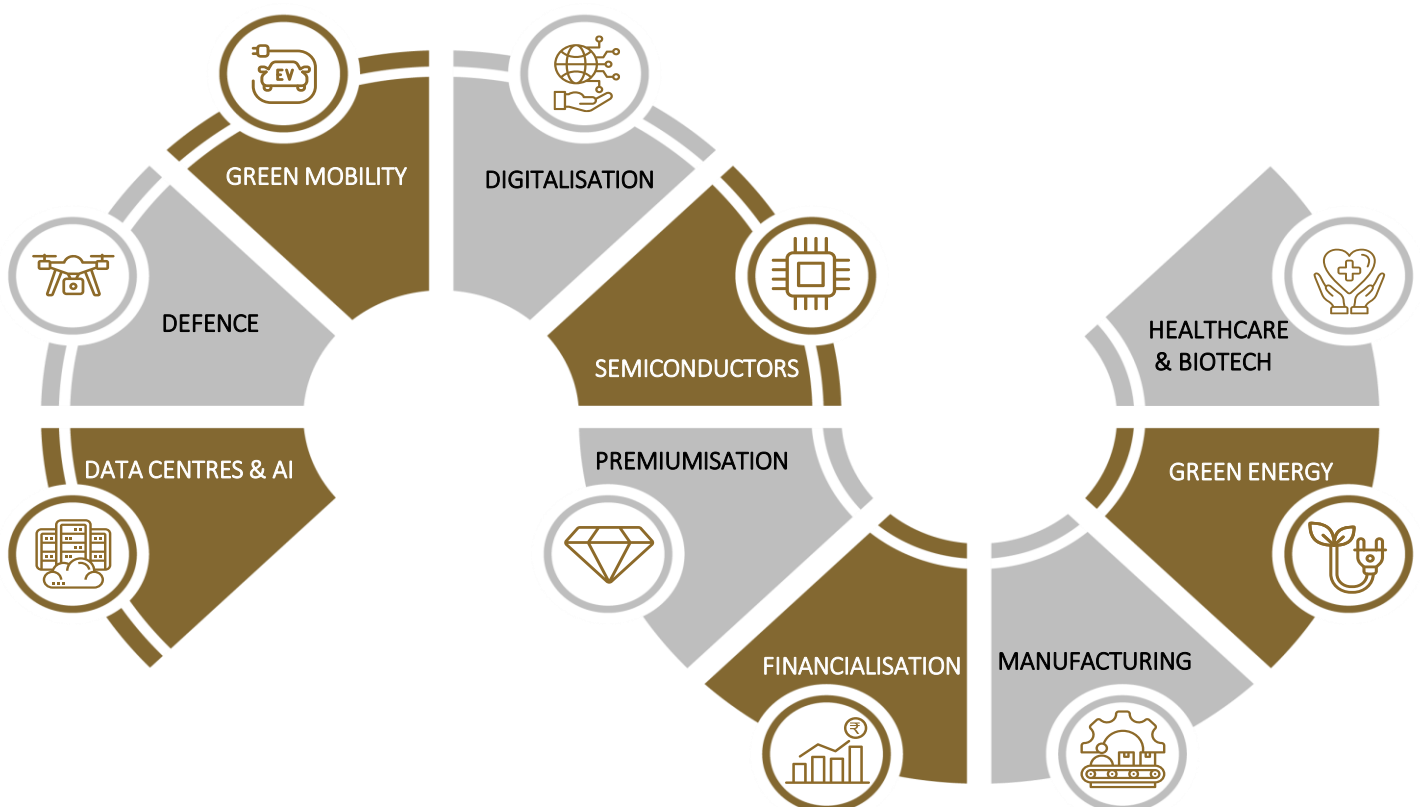
Alchemy Long Term Ventures Fund, Series 3 is one of the schemes of Alchemy Alternative Investment Trust, registered with Securities and Exchange Board of India (SEBI) as a Category III – Alternative Investment Fund, vide registration number IN/AIF3/17-18/0381. Alchemy Capital Management is registered with the Securities and Exchange Board of India (SEBI) as a Portfolio Manager and appointed as the Investment Manager of the Trust and the Fund.

Investment Objective & Strategy[#]

Investment Objective: The investment objective of the Fund will be to carry on the investment activity of a Category III AIF, as permissible under the Regulations, and achieve long-term capital appreciation by primarily investing in equity and equity-linked instruments (including but not limited to compulsorily convertible preference shares and compulsorily convertible debentures). The Fund is sector agnostic and shall have the flexibility to invest in unlisted securities (up to 35% of its Investable Funds). The Fund may seek to primarily focus on investments in small-cap companies, however, it will continue to retain the flexibility to invest across other categories/opportunities as deemed appropriate by the Investment Manager, in its sole discretion.

Investment Strategy: The Fund will endeavour to generate long-term capital appreciation by investing in (a) listed equities with an aim to primarily focus on small-cap; (b) IPO (anchor book) opportunities; (c) Pre-IPO opportunities / unlisted securities; and (d) such other securities as permitted under Regulations and Applicable Laws.

Riding India's Growth Wave[^]



Note: [#]These are not the complete terms of the Fund. Please refer the Private Placement Memorandum and its Addendum for complete details. | The investment objectives and strategy are indicative and there are no assurances that it will be achieved. Investors are advised to take independent tax, legal, risk, financial and other professional advice. | [^]The sectors herein are solely for information purposes and may or may not form part of the client's portfolio.

Riding India's Growth Wave



Data Centres & AI

India has 969 million internet users as of March 2025. This is 3x more than the USA and equal to China. However, data centre capacity per 1000 users is 63% lower than China and 45x lower than the USA. (Source: TRAI)



Defence

Government has mandated an investment of INR 50 crore per project for developing high impact defence technologies. This automatically becomes a very fertile ground for private capital investments in defence startups backed by Ministry of Defence (MOD) led programmes like Acing Development of Innovative Technologies with iDEX (ADITI).



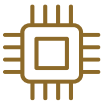
Green Mobility

By 2030, electric vehicles (EVs) are expected to account for approximately 20% of sales in the four-wheeler and light commercial vehicle (LCV) categories, with faster adoption likely for buses, at 30-35%. The Original Equipment Manufacturer (OEM) ecosystem in India has a cumulative investment pipeline of more than USD 6.5 billion in manufacturing of EVs and battery packs. (Source: McKinsey, Alchemy Capital | Note: Data as of June 2025)



Digitalisation

The rise of digital platforms in India is one of the most transformative shifts in the country's socio-economic and business landscape over the last decade. Driven by massive internet penetration, affordable data, and government-led digital initiatives, India is now home to one of the largest and fastest-growing digital ecosystems in the world.



Semiconductors

India is fast emerging as a critical player in the global semiconductor ecosystem. India's semiconductor consumption is expected to rise from USD 34 billion in 2023 to USD 60 billion by 2026, and further to USD 124 billion by 2030. (Source: Avendus Spark | Note: Data as of October 2024)



Premiumisation

India has one of the fastest-growing cohort of millionaires, with over 3.5 lakh millionaires (in USD terms). (Source: <https://www.marketwatch.com/story/this-fast-growing-country-is-minting-one-new-millionaire-every-15-minutes-ac0eca5c>)



Financialisation

India's journey from a savings-oriented economy reliant on physical assets to one embracing financial instruments marks a pivotal shift in household behaviour. This transition — termed the financialisation of savings — reflects a broader alignment of the nation's capital with economic growth drivers.



Manufacturing

India is rapidly positioning itself as a global manufacturing hub, supported by strong macroeconomic fundamentals, proactive policy interventions, and the realignment of global supply chains. Several structural and cyclical drivers are catalysing this transformation.



Green Energy

India is undergoing a historic energy transition from fossil fuels to a cleaner & more sustainable ecosystem. With global climate commitments, supportive policy frameworks and a rising appetite for green alternatives, sectors like renewables, green hydrogen, energy storage and smart grids are witnessing accelerated investment and innovation. This is not just a shift in power sources - it's a reimagining of the entire energy value chain.



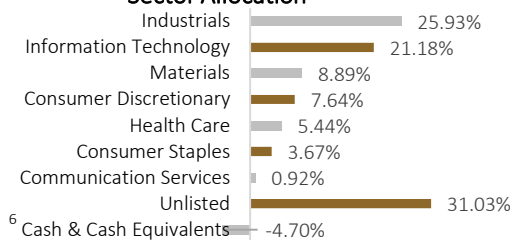
Healthcare & Biotech

India's healthcare sector is proving to be not just a domestic imperative but a global growth engine. From MedTech innovation and pharmaceutical manufacturing to digital health platforms, diagnostics, and hospital infrastructure, the overall category is being reshaped by rising demand and growing global recognition of India's medical capabilities. The convergence of technology, policy, and private capital is creating scalable opportunities across the value chain.

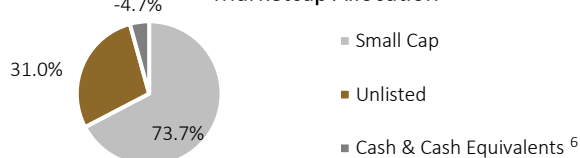
Performance and Composition - (Similar Existing Strategies)¹

Alchemy Long Term Ventures Fund (Inception Date: September 1, 2023)

Sector Allocation²



Marketcap Allocation³



Periodic Returns⁴

Period	Post Fees, Expenses and Taxes	Post Fees, Expenses and Pre Taxes
1 Month	10.0%	11.2%
3 Months	12.9%	14.4%
6 Months	14.6%	16.5%
1 Year	16.0%	18.3%
2 Years	20.6%	24.1%
Since Inception	22.1%	25.9%

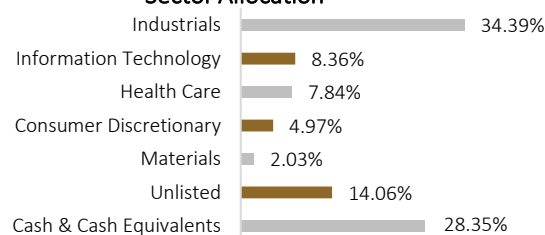
Portfolio Holdings – Listed	Weight (%) ⁵
Force Motors Ltd	10.4%
Sasken Technologies Ltd	7.6%
Dynamatic Technologies Ltd	6.2%
Centum Electronics Ltd.	5.8%
Wockhardt Ltd	5.4%
E2E Networks Ltd	5.3%
Schneider Electric Infrastructure Ltd	5.1%
KDDL Ltd	4.3%
Cemindia Projects Ltd (formerly known as ITD Cementation India Ltd)	4.2%
Neogen Chemicals Ltd	4.2%
CarTrade Tech Ltd	3.3%
Avalon Technologies Ltd	2.5%
Cosmic CRF Ltd	2.4%
Piccadilly Agro Industries Ltd	2.3%
Associated Alcohols & Breweries Ltd	1.4%
Arrow Greentech Ltd	1.2%
Mishra Dhatu Nigam Ltd	1.2%
D B Corp Ltd	0.9%
Total	73.7%

Portfolio Holdings – Unlisted	Weight (%) ⁵
Sterling & Wilson Data Center Pvt Ltd – Equity	8.8%
MCT Cards & Technology Pvt Ltd - Equity	7.8%
Purple Style Labs Limited - Equity	5.3%
Kiranakart Technologies Private Ltd – CCPS	4.5%
Beroe Consulting India Pvt Ltd – CCPS	2.7%
Sanlayan Technologies Pvt Ltd – CCPS	1.9%
Total	31.0%

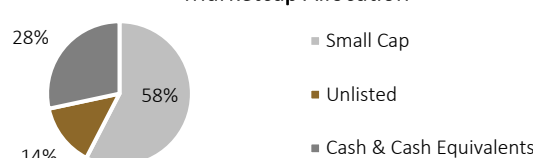
Cash & Cash Equivalents ⁶	-4.7%
Grand Total	100%

Alchemy Long Term Ventures Fund, Series 2 (Inception Date: September 1, 2025)

Sector Allocation²



Marketcap Allocation³



Periodic Returns⁴

Period	Post Fees, Expenses and Taxes	Post Fees, Expenses and Pre Taxes
1 Month	4.3%	5.0%
3 Months	10.6%	12.7%
6 Months	10.8%	13.1%
Since Inception	9.0%	11.3%

Portfolio Holdings – Listed	Weight (%) ⁵
NRB Bearings Ltd	7.1%
E2E Networks Ltd	6.0%
Afcom Holdings Ltd	5.9%
GE Power India Ltd	5.0%
Fredun Pharmaceuticals Ltd	4.6%
Dynamatic Technologies Ltd	3.4%
Interarch Building Solutions Ltd	3.4%
Senores Pharmaceuticals Ltd	3.2%
Azad Engineering Ltd	3.1%
Marine Electricals India Ltd	2.6%
Garware Technical Fibres Ltd	2.6%
SJS Enterprises Ltd	2.4%
Shilchar Technologies Ltd	2.3%
Graphite India Ltd	2.3%
Archean Chemical Industries Ltd	2.0%
Quality Power Electrical Equipments Ltd	1.7%
S & S Power Switchgear Ltd	0.01%
Total	57.6%

Portfolio Holdings – Unlisted	Weight (%) ⁵
Wingreens Farms Pvt Ltd - CCPS	5.8%
4Basecare Precision Health Private Limited - Equity	4.6%
Plays Technologies Pvt Ltd – CCPS	2.9%
Fredun Pharmaceuticals - Warrants	0.8%
Total	14.1%

Cash & Cash Equivalents	28.3%
Grand Total	100%

All data as of May 31, 2026

¹Alchemy Long Term Ventures Fund and Alchemy Long Term Ventures Fund, Series 2 are existing schemes launched under the Alchemy Alternative Investment Trust, each following a similar investment strategy. For informational purposes, the past performance of these schemes is provided herein to showcase the track record of the strategy.

² Source: Bloomberg except for Dynamatic Technologies which is classified under Industrials instead of Consumer Discretionary based on Alchemy's investment thesis.

³ Source: AMFI

⁴ Consolidated Returns are calculated using unitization method. The Consolidated Returns may vary with investors' returns depending on the class/series investor have subscribed into. | Past performance is not indicative of the future performance. Returns less than 1 Year: Absolute, greater than 1 Year: CAGR | **Performance related information provided herein is not verified by SEBI.** | Performance Data for CRISIL AIF Index – Category III is available till March 2025. Please refer to the Category III AIF benchmarking report issued by CRISIL provided separately with this document.

⁵ Weight (%) = Exposure at Market Value / Net Asset Value of the fund.

⁶ Cash & Cash Equivalents is negative due to tax provisions, actual cash is 1.12% of the portfolio value.

Key Fund Terms#

Scheme Name	Alchemy Long Term Ventures Fund, Series 3	
Investment Manager	Alchemy Capital Management Pvt. Ltd.	
Term of the Fund	4 (four) years from the date of First Closing of the Fund and extendable by up to 1 (One) year or such other period as permitted under Regulations with the prior consent of Two-Third Majority of Contributors.	
Investment Allocation	The Fund shall be sector agnostic with investments diversified across sectors as permitted under the Regulations which includes investments in listed securities (0-100%), unlisted securities (0-35%), other securities/instruments as permitted under Regulations and Applicable Laws.	
Minimum Capital Commitment	Minimum Rs 1 Cr	
Redemption	The Contributors will not be entitled to exit from the Fund except upon dissolution/liquidation/expiry of the Term of the Fund in the manner prescribed under paragraph 9 titled "Term of the Fund and Termination" of the Memorandum	
Risk Appetite	High Risk	
Fund Manager	Hiren Ved	
Commitment Period	The Commitment Period for the Fund shall commence from the date of First Closing and end on completion of 6 (six) months from the Final Closing, during which period the Capital Commitments can be drawn down upon issuance of Drawdown Notice/s to the Contributors. The Commitment Period may be extended by the Investment Manager for a further period of up to 3 (three) months at its sole discretion.	
Target Investors	Targeted Investors of the Fund are sophisticated and/or private investors including but not limited to Accredited Investors, fund of funds, government institutions, corporates, public sector undertakings, global development financial institutions, multilateral organizations, high net worth individuals, non-resident Indians (making non-repatriable investments through a Non-Resident Ordinary Account) and other permissible investors who are eligible to invest in the Fund under Applicable Laws and who have made or agreed to make a Capital Contribution to the Fund, pursuant to execution of Contribution Agreements in relation to the Fund.	
Fee Plan Option I Management Fee Plan	Investment Amount (INR)	
	Regular Plan (Per annum)^^	
	1 Cr to Less than 3 Cr	2.50%
	3 Cr to Less than 5 Cr	2.25%
	more than or equal to 5 Cr	2.00%
	Performance Fees: Nil	
Fee Plan Option II Performance Fee Plan	Investment Amount (INR)	
	Regular Plan (Per annum)^^	
	1 Cr to Less than 3 Cr	1.50%
	3 Cr to Less than 5 Cr	1.25%
	more than or equal to 5 Cr	1.00%
	Performance Fees: Performance Fees: 20% over the hurdle, Hurdle rate is 10% (XIRR) calculated on the Capital Contribution Amount.	

Note: #These are not the complete terms of the Fund. Please refer the Private Placement Memorandum and its Addendum for complete details. | ^^Regular Plan: Investing through a distributor or a placement agent. All clients have an option to invest in the fund under Direct Plan.

Disclaimer: Investments in securities market are subject to market risks. Please read all offer documents carefully before investing. To read complete disclaimer please visit: <https://www.alchemycapital.com/disclaimer-disclosure.aspx>

Regulatory Disclosures: • All clients have an option to invest in the above products / investment approach directly, without intermediation of persons engaged in distribution services. • This document, its contents, especially the Performance related information, is not verified by SEBI or any regulator.

Alchemy Capital Management Pvt. Ltd.

B-4, Amerchand Mansion, 16 Madame Cama Road, Mumbai 400 001

Phone: +91-22-66171700 | Website: www.alchemycapital.com | Email ID: contactus@alchemycapital.com

CIN: U67120MH1999PTC119811 | SEBI Regn No.: INP000000365